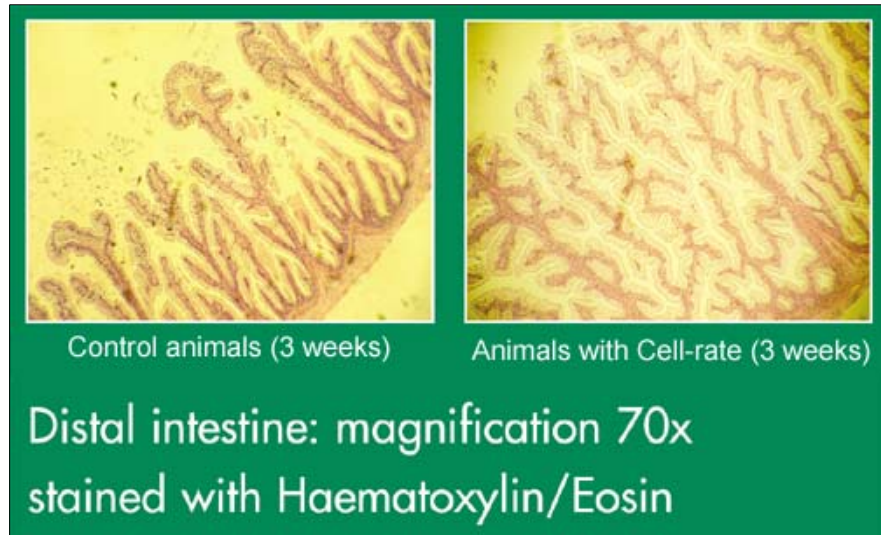


EFFECT OF CELL-RATE™ ON INTESTINAL VILLI

The purpose of the following study was to determine the effect of Cell-rate™ on the intestine. The test measured the acceleration of growth and differentiation of the intestine and the increase in the length of the intestinal villi.

	Control	Cell-rate™
Number of animals	10	10
Villus height (cells)	75 ± 2.3	94 ± 4.7
Muscle thickness (μm)	47.1 ± 1.0	50.7 ± 3.3



The results clearly show that Cell-rate™ dramatically increases the height of the intestinal villi and the subsequent absorption capabilities of the intestine. Increasing intestinal villi height is extremely important as nutrients are absorbed through the villi.